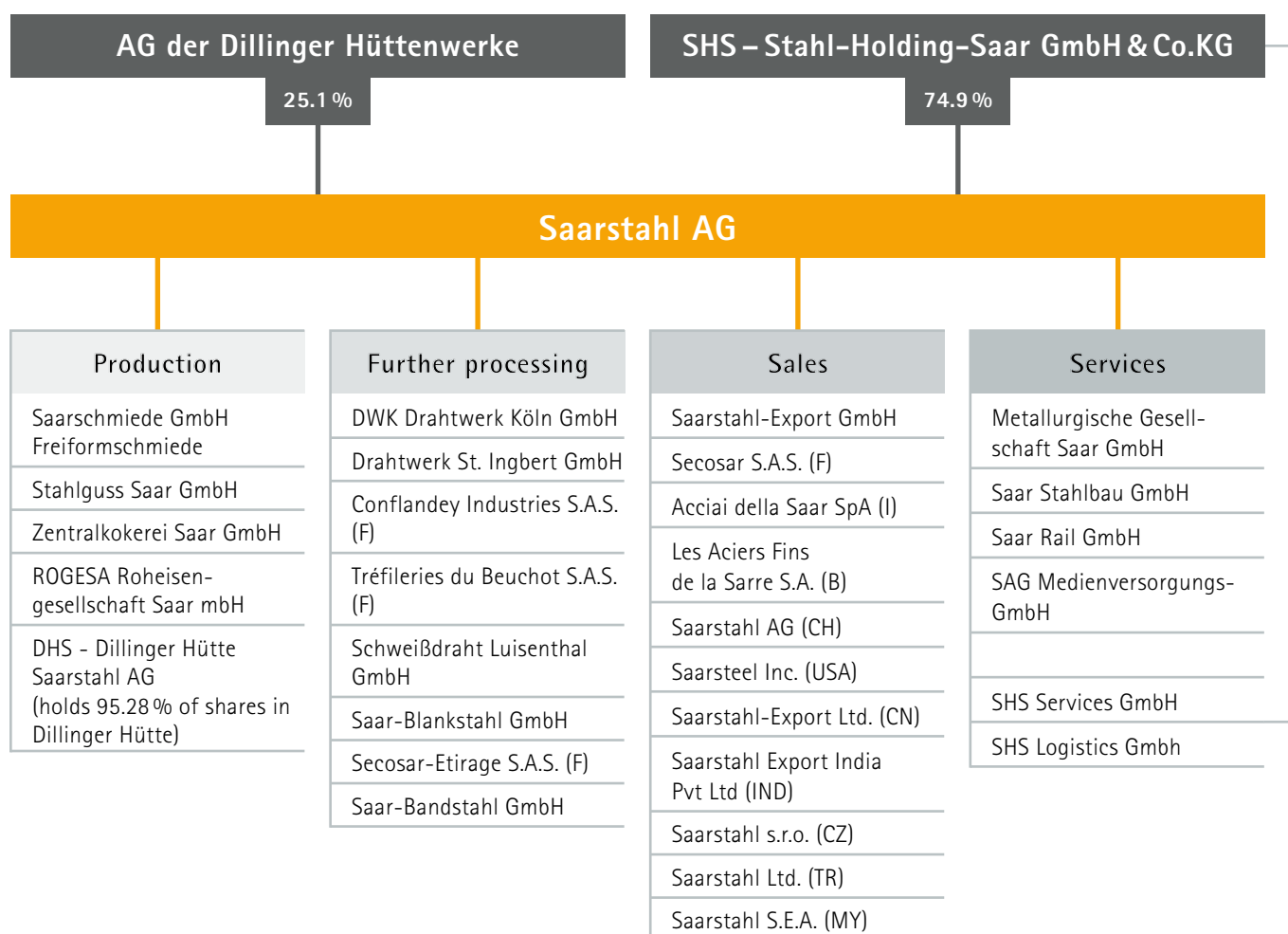


Facts and Figures 2015

Saarstahl Group – at a glance

		2012	2013	2014	2015
Production					
Crude steel production	Tt	2,315	2,520	2,727	2,779
Workforce					
	31 Dec.				
Employees (without trainees)		6,745	6,384	6,498	6,591
Trainees		303	252	263	259
Key financial data of Saarstahl Group					
Sales	€ million	2,492	2,280	2,361	2,159
EBITDA	€ million	147	19	233	138
EBIT	€ million	9	-131	80	2
Total assets	€ million	3,834	3,614	3,485	3,400
Equity	€ million	2,768	2,577	2,608	2,573
Equity ratio	%	72.2	71.3	74.8	75.5
Investments	€ million	141	84	38	90

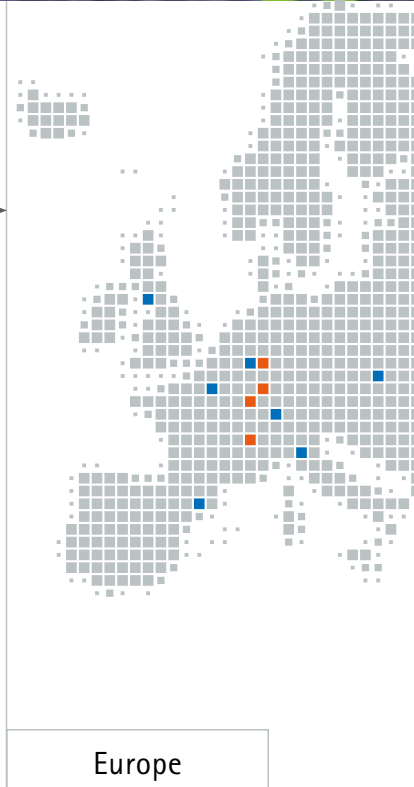
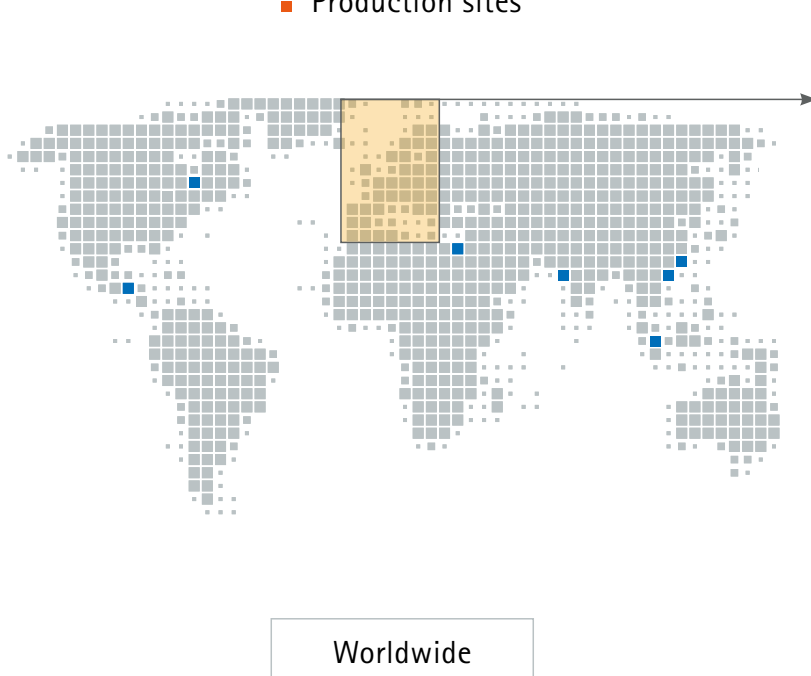
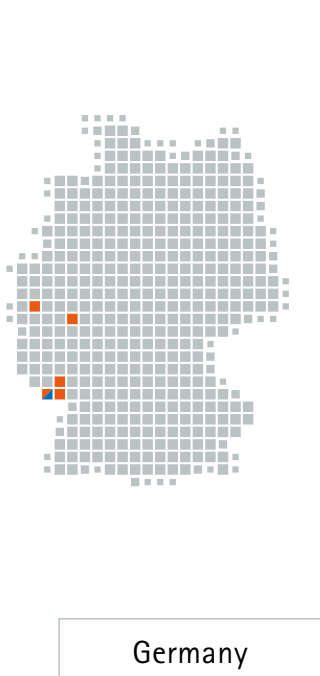
The most important shareholdings





Sales and Production

- Sales locations
- Production sites

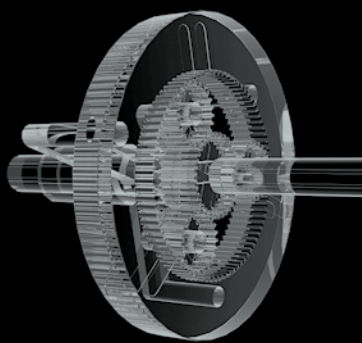


Customer industries



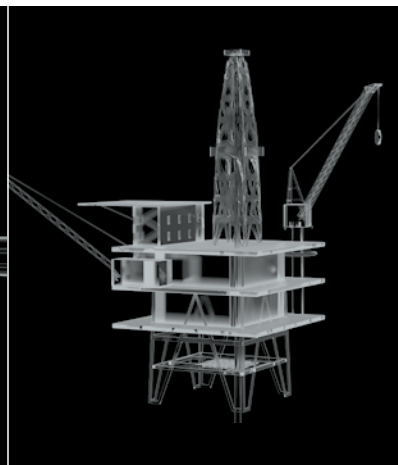
Automotive

65 %



Mechanical Engineering

20 %



Construction Industry

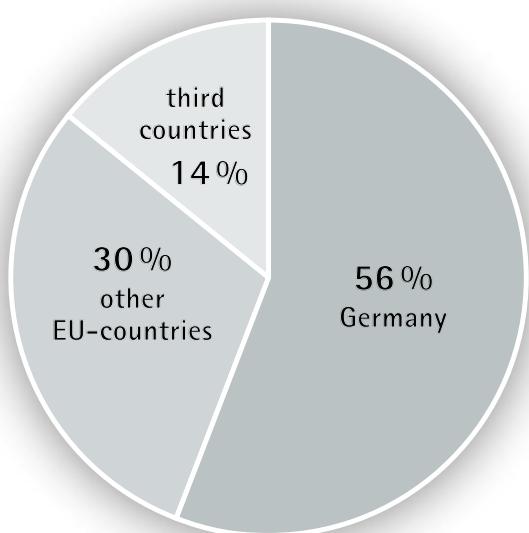
10 %



Industrial Applications
and Private Sector

5 %

Sales by regions 2015



Sales organisations

Germany

Saarstahl AG
Sales / Marketing
66330 Völklingen

Tel.: +49 68 98 10-4707 | Fax: +49 68 98 10-54 707
E-Mail: sales@saarstahl.com

Worldwide

Saarstahl-Export GmbH
66330 Völklingen

Tel.: +49 68 98 10-4479 | Fax: +49 68 98 10-54 477
E-Mail: sales@saarstahlexport.com

Product mix

- Tyre cord
- Soft-, quenched- and free cutting steels
- Steel for cold heading and cold extrusion
- Spring steel
- Bearing steel
- Chain steel
- Steel for cold, semi-hot and hot forming
- Welding wire
- Prestressing steel
- High and low carbon drawing qualities

Saarstahl AG

Saarstahl AG
66330 Völklingen
Tel.: +49 68 98 10-0
Fax: +49 68 98 10-4001

E-Mail: saarstahl@saarstahl.com
Internet: www.saarstahl.com