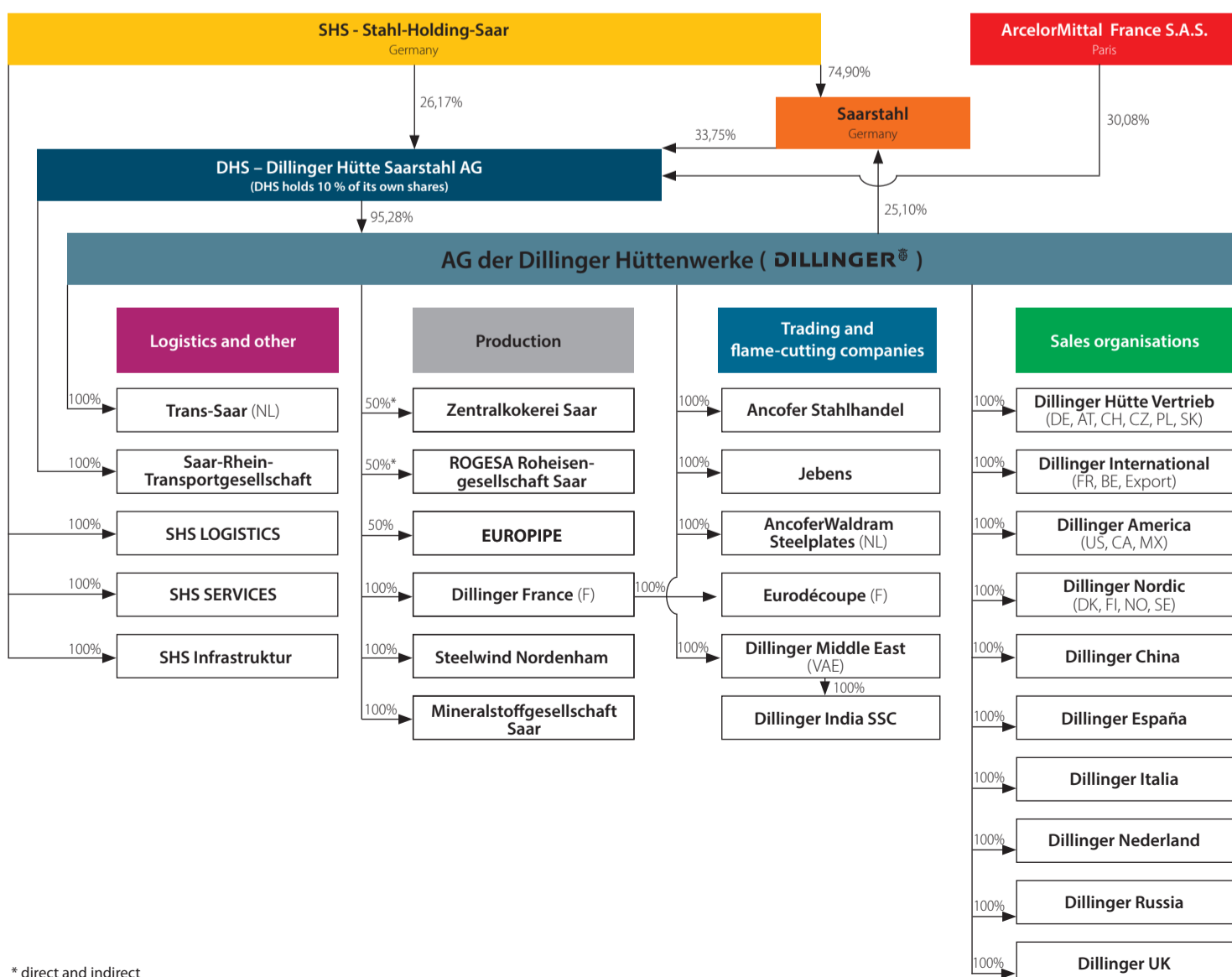


## Dillinger's main data at a glance

		2014	2015	2016	2017
<b>Production</b>					
Crude steel production	kt	2 345	2 401	2 267	2 521
Heavy plate production in total	kt	1 820	1 856	1 882	2 043
at Dillingen	kt	1 258	1 296	1 284	1 391
at Dunkirk (Dillinger France)	kt	562	560	598	652
<b>Employees (without trainees)</b> per 31.12.					
at Dillingen		5 048	5 081	5 109	4 932
at Dunkirk (Dillinger France)		550	557	541	540
<b>Key financial data of Dillinger</b>					
Sales	millions of €	1 872	1 732	1 636	1 958
EBITDA	millions of €	237	110	- 37	70
EBIT	millions of €	183	57	- 98	- 3
<b>Key financial data and total of employees of Dillinger Group</b> per 31.12.					
Sales	millions of €	2 001	1 838	1 762	2 122
EBITDA	millions of €	193	118	31	210
EBIT	millions of €	88	10	- 80	87
Employees		7 365	7 536	7 518	7 341

## The most important shareholdings of Dillinger (simplified)



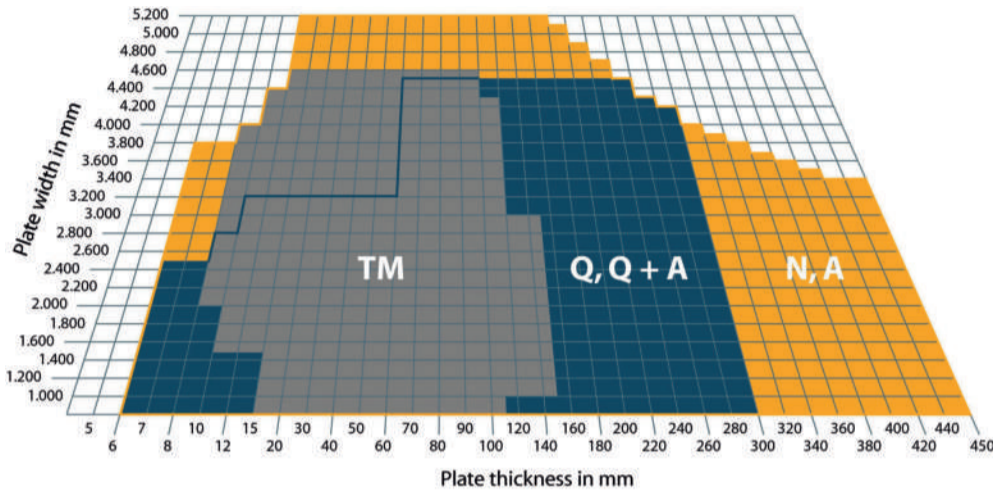
## The Bøkfjord Bridge, Norway

Transportation of this network arch bridge took eighteen days, using a barge and pontoon, with ships manoeuvring the barge. The bridge will in future connect Norway with Russia and thus forms part of international E-highway 105.

Length: 120 m  
 Dillinger scope of supply: around 600 t  
 Grades: Dillimax 500ML, S420ML, S355ML  
 Plate thickness: up to 70 mm



© Thomas Schüler, SBN



## Dimensions for various delivery conditions

Plate dimensions beyond the standard dimension range are possible on request in many cases.

**N, A** = normalised  
**TM** = thermomechanically rolled  
**Q, Q+A** = quenched / quenched + tempered

Max. plate length: 28 m  
 Max. plate weight: 42 t\*

\* up to 52 t in special cases



© Steelwind GmbH

## Race Bank Offshore Wind Farm, UK

Since the spring of 2018, the ninety-one turbines installed at this offshore wind farm, with a total output of 583 MW, have been supplying more than 400,000 households in the United Kingdom with electricity.

Dillinger scope of supply: 52,000 t  
 Plate thickness: up to 92 mm  
 Grades: L485ME-PSL2

## Monaco long-distance natural gas pipeline

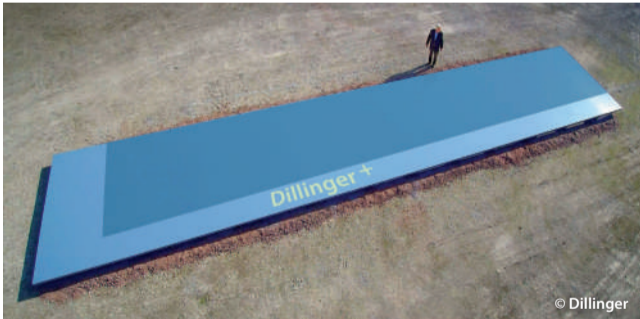
The Monaco long-distance natural gas pipeline traverses a distance of 87 km from Burghausen to Finsing, near Munich, conveying natural gas to and from storage facilities in Bavaria and Austria.

Dillinger scope of supply: 60,000 t  
 Grade: Dillimax 500ML  
 Plate width up to 3,740 mm  
 Plate thickness: 23 and 25 mm



© bayernets GmbH

## Another world first!



© Dillinger

Rolled from a 600 mm slab and featuring the imposing dimensions of 70 x 4,200 x 22,500 mm - the world's largest ever continuous cast and thermomechanically rolled plate. The outline on the plate emphasises Dillinger's dimensional lead over the largest product available from any competing steelmaker.

## Product mix

- General structural steels
- TM-rolled structural steels
- Weather-resistant structural steels
- Fine-grained structural steels
- Normal-strength shipbuilding steels
- Extra-high strength shipbuilding steels
- TM-rolled shipbuilding steels
- High-strength water-quenched and tempered structural steels
- Wear-resistant steels
- Special structural steels for offshore applications
- Linepipe steels
- Unalloyed steels for pressure-vessel construction
- Alloyed steels for pressure-vessel construction
- HIC-resistant steels
- TM-rolled steels for pressure-vessel construction
- Ni-alloyed steels for low-temperature applications
- Unalloyed tool steels
- Alloyed tool steels
- Unalloyed mould and die steels
- Alloyed mould and die steels
- Security steels
- Longitudinally profiled plates
- Chord plates
- Semi-products

## Sales organisations

### Germany

DILLINGER HÜTTE VERTRIEB GmbH  
 POB 104927  
 D-70043 Stuttgart  
 Germany

Phone +49 711 61 46 0  
 Fax +49 711 61 46 221

### France

DILLINGER INTERNATIONAL  
 39/41 Rue Louis Blanc  
 92400 Courbevoie  
 France

Phone +33 155 24 21 91  
 Fax +33 147 17 68 83

Our coordination centre in Dillingen will be pleased to inform you of contacts in other countries, please call

Phone +49 6831 47 22 23  
 Fax +49 6831 47 33 50

or click on „contact worldwide“ at [www.dillinger.de](http://www.dillinger.de)

## AG der Dillinger Hüttenwerke

POB 1580  
 D-66748 Dillingen/Saar

Phone +49 6831 47 0  
 Fax +49 6831 47 22 12

[www.dillinger.de](http://www.dillinger.de)  
[info@dillinger.biz](mailto:info@dillinger.biz)

