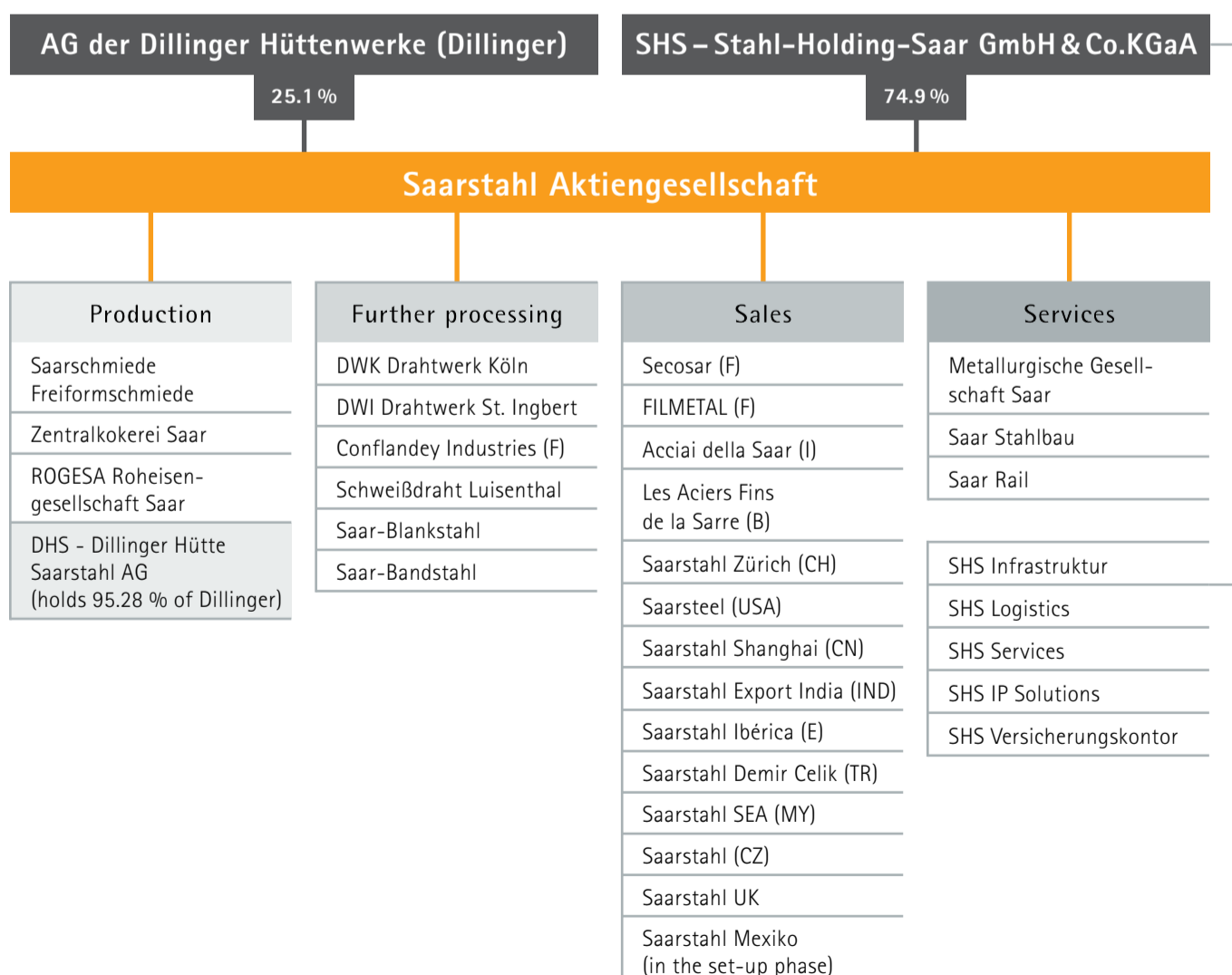


Facts and Figures 2019

Saarstahl Group – at a glance

		2016	2017	2018	2019
Production					
Crude steel production	kt	2,451	2,785	2,782	2,281
Workforce					
	per 31.12.				
Employees (without trainees)		6,554	6,366	6,384	6,160
Trainees		281	289	287	266
Key financial data of Saarstahl Group					
Sales	Mio. €	2,028	2,440	2,528	2,206
EBITDA	Mio. €	-26	230	205	-84
EBIT	Mio. €	-155	110	93	-193
Total assets	Mio. €	3,325	3,264	3,189	2,968
Equity	Mio. €	2,336	2,394	2,429	2,212
Equity ratio	%	70.3	73.3	76.2	74.5
Investments	Mio. €	101	56	68	105

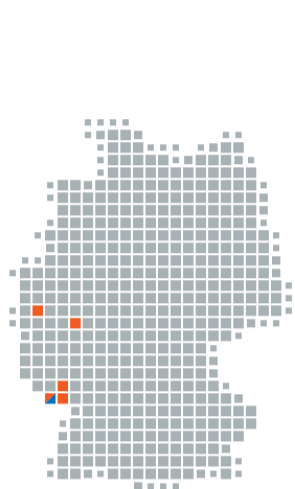
The most important shareholdings (simplified)



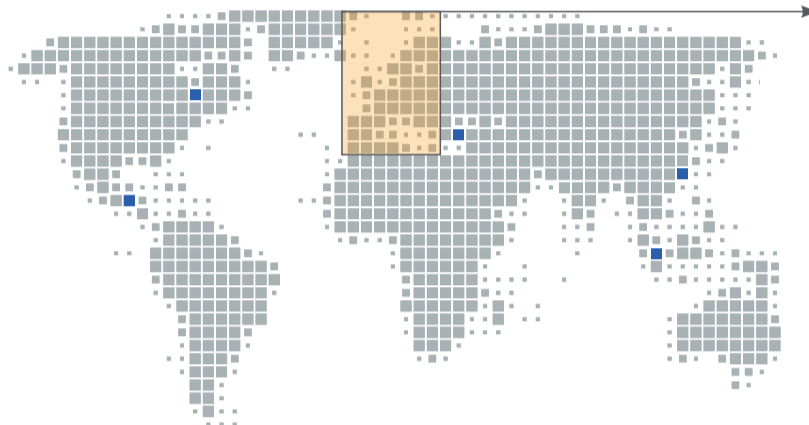


Sales and Production

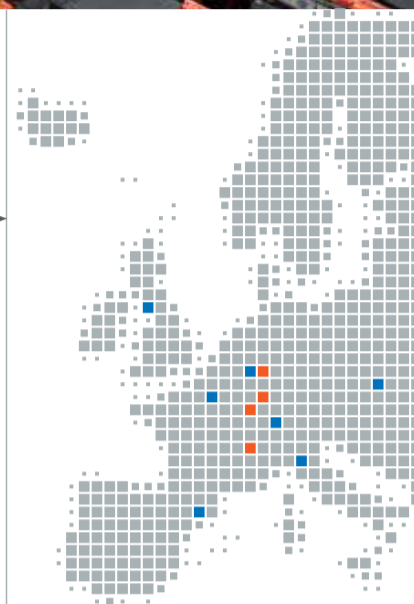
- Sales locations
- Production sites



Germany



Worldwide



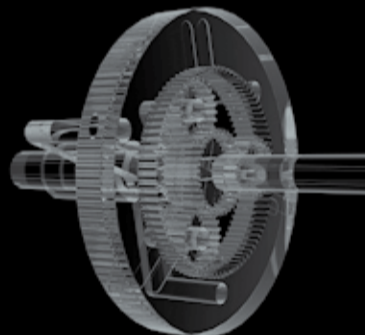
Europe

Customer industries



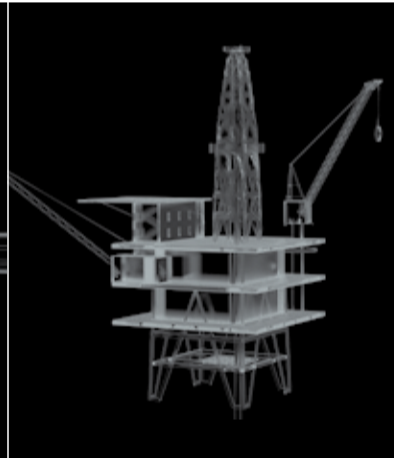
Automotive

65 %



Mechanical engineering

20 %



Construction industry

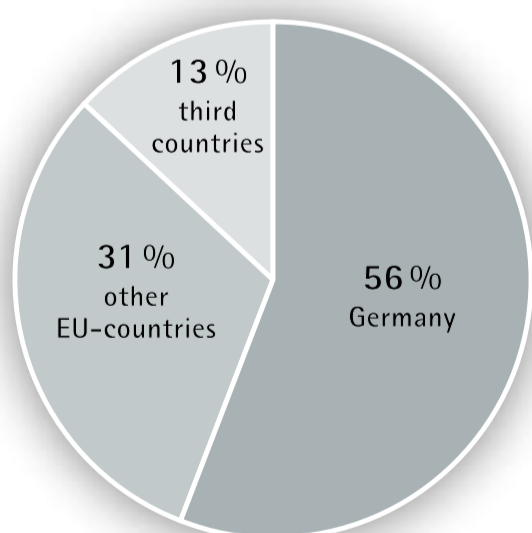
10 %



Industrial applications and private sector

5 %

Sales by regions 2019



Sales organisations

Saarstahl AG
 Sales / Marketing
 66330 Völklingen
 Tel.: +49 68 98 10-4707
 Fax: +49 68 98 10-54 707
 E-mail: sales@saarstahl.com

Product mix

- Tyre cord, welding wire, prestressing steel
- Soft-, quenched- and free cutting steels
- Steel for cold heading and cold extrusion
- Spring steel
- Bearing steel
- Chain steel
- High and low carbon drawing qualities
- Constructional steels and fine-grained constructional steels
- Quenched and tempered steels
- AFP steels
- Case hardening steels

Saarstahl AG

Saarstahl AG
 66330 Völklingen
 Tel.: +49 68 98 10-0
 Fax: +49 68 98 10-4001
 E-mail: saarstahl@saarstahl.com
 Internet: www.saarstahl.com