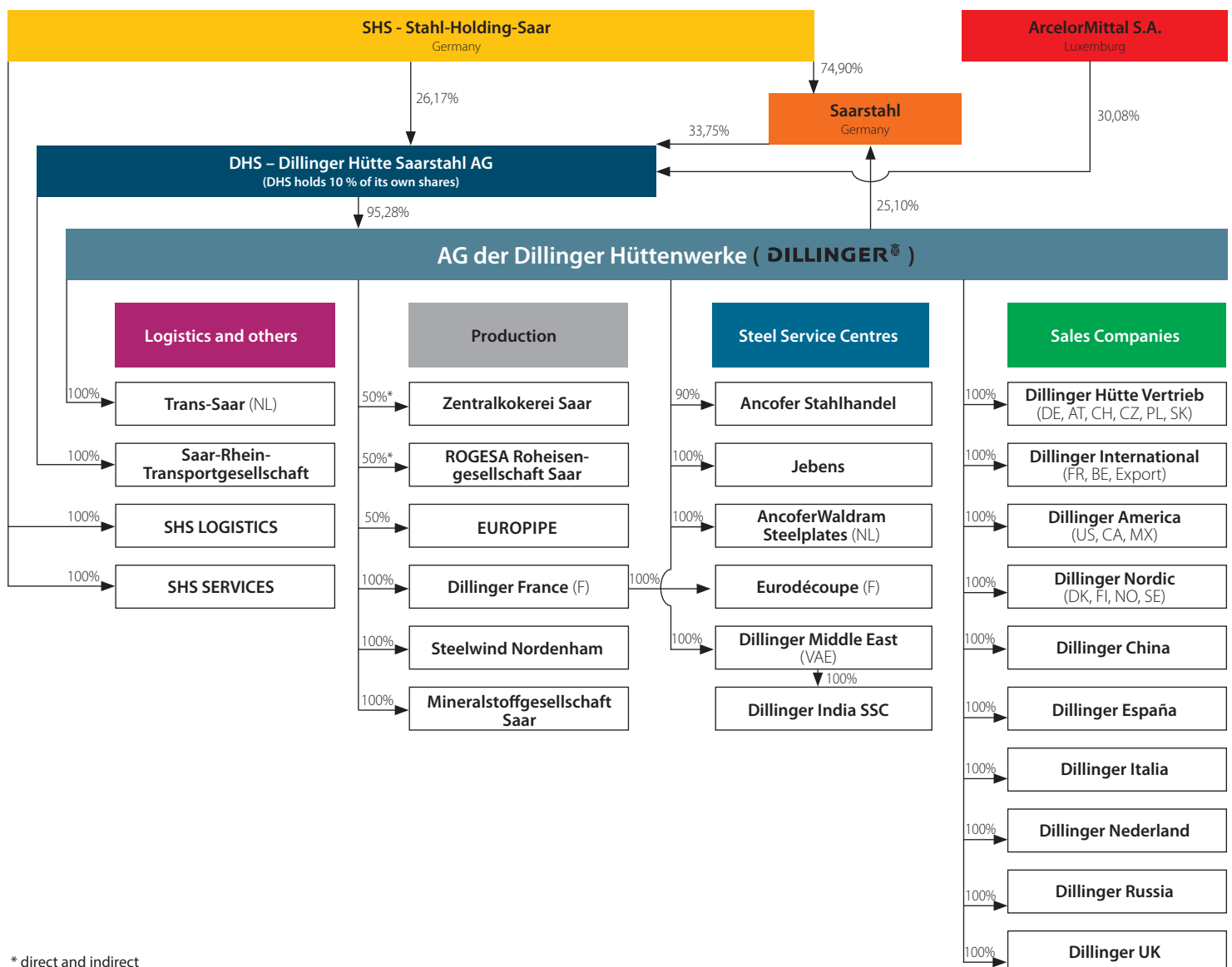


Dillingers most important data at a glance

		2012	2013	2014	2015
Production					
Crude steel production	kt	2 298	2 023	2 345	2 401
Heavy plate production in total	kt	1 882	1 660	1 820	1 856
at Dillingen	kt	1 309	1 114	1 258	1 296
at Dunkirk (Dillinger France)	kt	573	546	562	560
Employees (without trainees) per 31.12.					
at Dillingen		5 377	5 291	5 048	5 081
at Dunkirk (Dillinger France)		624	590	550	554
Key financial data of Dillinger Hütte					
Sales	Mio. €	2 351	1 816	1 872	1 732
EBITDA	Mio. €	266	3	237	110
EBIT	Mio. €	209	- 53	183	57
Key financial data and total of employees of Dillinger Group					
Dillinger Group (DHS consolidated) per 31.12.					
Sales	Mio. €	2 498	1 979	2 001	1 838
EBITDA	Mio. €	261	- 66	193	118
EBIT	Mio. €	161	- 167	88	10
Employee	Mio. €	7 854	7 614	7 365	7 536

The most important shareholdings of Dillinger Hütte (simplified)



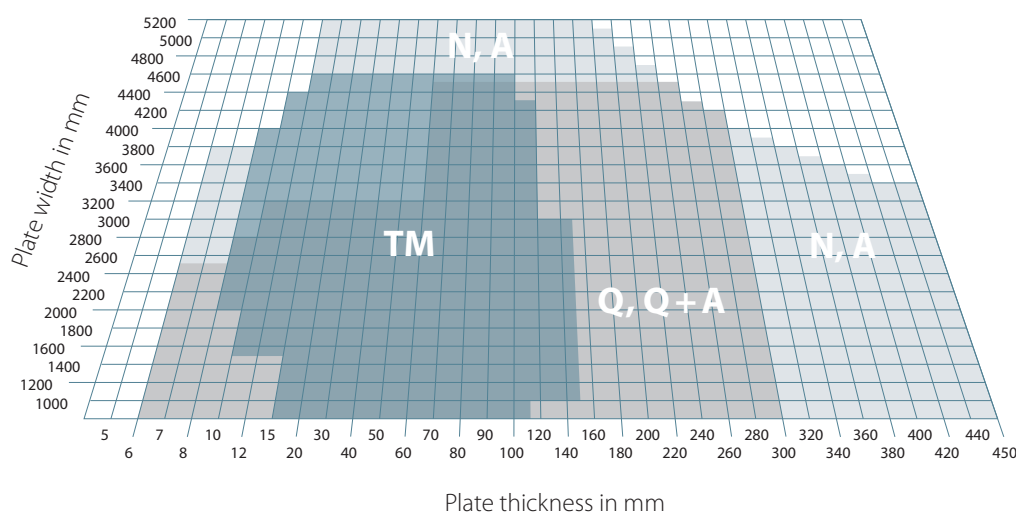
* direct and indirect



Lifting bridge Botlek, The Netherlands

The Botlek bridge in Rotterdam is one of the largest lifting bridges in the world. It consists of six 64 m high oval lifting towers and two moveable steel decks weighing each 4,850 t.
 Length: 1,243 m
 Dillinger delivery: 9,000 t
 Plate thicknesses: up to 185 mm
 Steel grades: S355J2+N, S355NL, S355J2C+N, S460NL, S460M/ML, S550Q

© Eiffel Deutschland Stahltechnologie



Delivery program for different delivery conditions

Plate dimensions beyond our delivery program are often possible to manufacture after inquiry.

N, A = normalized
TM = thermomechanically rolled
Q, Q+A = quenched / quenched and tempered

Max. plate length: 28 m
 Max. plate weight: 42 t*

* in special cases up to 52 t

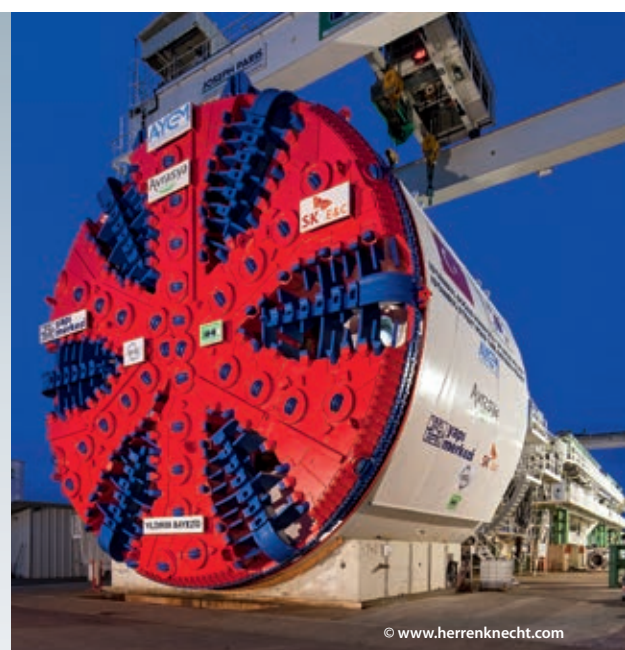


Offshore wind farm Baltic 2

With its 80 Siemens SWT-3,6-120 turbines, 32 km north of the island Rügen, it is the largest offshore wind farm in the Baltic Sea area.
 Area: 27 km²
 Water depths: 23 – 44 m
 Dillinger delivery: 37,700 t
 Plate thicknesses: 20 – 85 mm
 Steel grades: S355ML, S420ML, S355G10+M

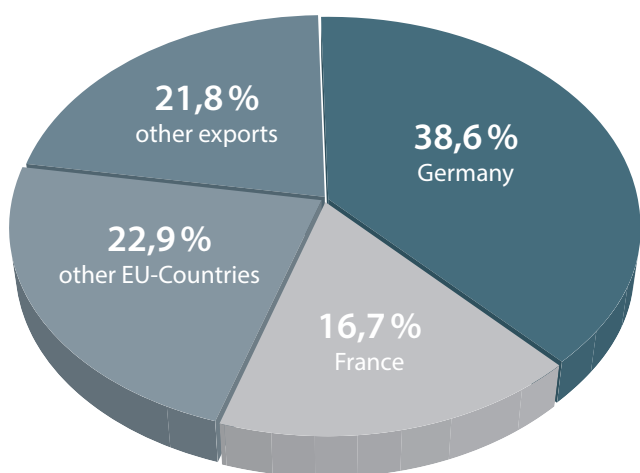
Tunnel Drilling Machine Istanbul

Underground railway connection between Europe und Asia
 Tunnel length: 3,340 m
 Diameter: 13.7 m
 Driving power: 4,900 kW
 Dillinger delivery: > 1,000 t



© www.herrenknecht.com

Turnover Dillinger Hütte 2015 by countries



Product mix

- General structural steels
- TM rolled structural steels
- Weather-resistant structural steels
- Fine-grained structural steels
- Normal strength shipbuilding steels
- High strength shipbuilding steels
- TM rolled shipbuilding steels
- High strength water quenched structural steels
- Wear-resistant steels
- Special structural steels for offshore applications
- Linepipe steels
- Unalloyed steels for pressure vessel construction
- Alloyed steels for pressure vessel construction
- HIC resistant steels
- TM rolled steels for pressure vessel construction
- Ni alloyed steels for low temperature applications
- Unalloyed tool steels
- Alloyed tool steels
- Unalloyed mould and die steels
- Alloyed mould and die steels
- Protection steels
- Longitudinally profiled plates
- Flange plates
- Semi products

Sales organisations

Germany

DILLINGER HÜTTE VERTRIEB GmbH
 P.O. Box 104927
 D-70043 Stuttgart
 Germany
 Phone +49 711 61 46 0
 Fax +49 711 61 46 221

France

DILLINGER INTERNATIONAL
 39/41 Rue Louis Blanc
 92400 Courbevoie
 France
 Phone +33 155 24 21 91
 Fax +33 147 17 68 83

For your local representative please contact our coordination office in Dillingen

Phone +49 6831 47 22 23
 Fax +49 6831 47 33 50

or visit the category „contact worldwide“ on www.dillinger.de

AG der Dillinger Hüttenwerke

Postfach 1580
 D-66748 Dillingen/Saar

Phone +49 6831 47 0
 Fax +49 6831 47 22 12

www.dillinger.de
info@dillinger.biz

